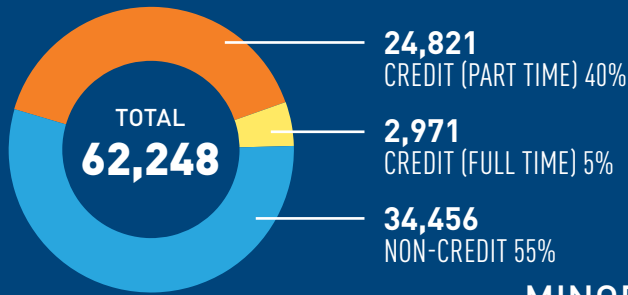
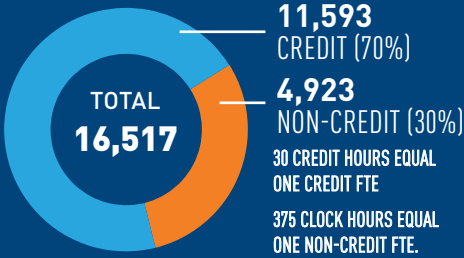


2018-2019 CCBC QUICK FACTS

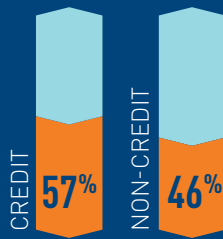
ENROLLMENT DATA



ANNUAL FTE



MINORITY STUDENTS



13,177 STUDENT COMPLETION

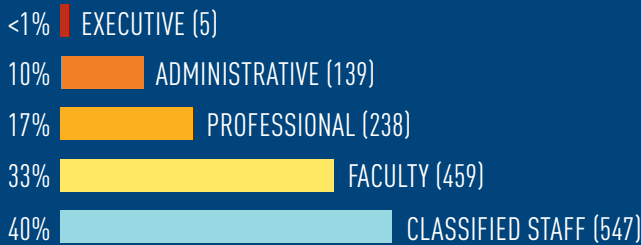
2,131
DEGREES

6,687
TRANSFERS

1,410
CERTIFICATIONS
592 CREDIT / 818 NON-CREDIT

2,949
EXTERNAL LICENSURES/
CERTIFICATIONS
RESULTING FROM CCBC TRAINING

1,388 FULL-TIME EMPLOYEES



2,796 ADJUNCT FACULTY/ PART-TIME STAFF

OPERATING BUDGET
\$261,300,000

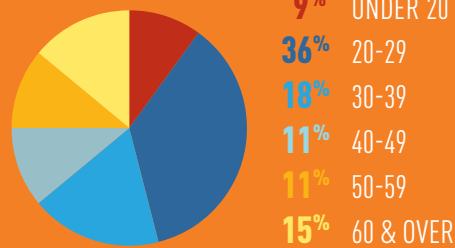
FOUNDATION NET ASSETS
\$15,972,760

STUDENT CHARACTERISTICS



58% FEMALE 42% MALE

STUDENT AGE



STUDENT ETHNICITY



STUDENT COST

\$122 TUITION PER CREDIT HOUR IN-COUNTY

\$231 TUITION PER CREDIT HOUR OUT-OF-COUNTY

\$350 TUITION PER CREDIT HOUR OUT-OF-STATE

Even with such affordable tuition, in a typical year CCBC students require more than **\$30 MILLION** in financial aid. Each year, the CCBC Foundation helps meet that need.

65%
BALTIMORE COUNTY RESIDENTS

46%
CREDIT STUDENTS RECEIVE SOME FORM OF FINANCIAL AID

34%
PELL GRANT RECIPIENTS

48%
WORK 20 HOURS OR MORE PER WEEK

2,910
NON-NATIVE SPEAKERS

317
INTERNATIONAL STUDENTS

51%
MINORITY STUDENTS

63%
NEED REMEDIATION

12%
ENTER DIRECTLY FROM HIGH SCHOOL

51%
TRANSFER TO FOUR-YEAR UNIVERSITIES

83%
ENTER INTO THE WORKFORCE

92%
GRADUATES STAY & LIVE IN THE BALTIMORE REGION

SAVINGS AT CCBC

SAVINGS AT CCBC	ANNUAL TUITION AND FEES	TWO-YEAR SAVINGS AT CCBC
CCBC*	\$3,966	--
Four-year public average (in-state)**	\$9,970	\$12,008
Four-year private average**	\$34,740	\$61,548

* Based on in-county tuition rate for 12 credits per semester.

** The College Board, Trends in College Pricing 2017.

Due to rounding, percentages may not add to 100%.

COMMUNITY COLLEGE OF BALTIMORE COUNTY

COLLEGE PROMISE SCHOLARSHIP AVAILABLE
 ccbcmd.edu/collegepromise

With the combined power of the Baltimore County College Promise and the Maryland Community College Promise program, recent high school graduates could be eligible for a Promise scholarship covering all tuition and most fees at CCBC. This includes associate degrees, certificates and non-credit workforce training certifications. This could be a game-changer for eligible students!



Nearly 62,000 students each year come to CCBC to earn degrees, build careers and improve their lives with high-quality, accessible and affordable education.

CCBC PATHWAYS to success

CCBC completion rates continue to climb as CCBC makes student success both a mantra and a mission with initiatives such as streamlined course-selection tracks within the college's six designated academic PATHWAYS. ccbcmd.edu/pathways

ACCREDITATION

CCBC is accredited by the Middle States Commission on Higher Education, 3624 Market Street, Philadelphia, PA 19104, (267-284-5000). The Middle States Commission on Higher Education is an institutional accrediting agency recognized by the U.S. Secretary of Education and the Council for Higher Education Accreditation.

SPECIALIZED ACCREDITATIONS AND APPROVALS

The Association of Collegiate Business Schools and Programs

The National Association of Schools of Theatre Commission on Accreditation

Commission on Accreditation for Health Informatics and Information Management Education

The National League for Nursing Accrediting Commission and the Maryland Board of Nursing

The American Bar Association Committee on Legal Assistants

CAMPUS LOCATIONS



(2010-2017)

CCBC'S CONTRIBUTION TO THE REGION'S WORKFORCE

- 441 Engineers
- 473 Aviation experts
- 534 Teachers
- 460 Electricians
- 1,053 Hospitality professionals
- 1,410 Health technicians
- 1,476 Business administrators
- 1,497 Truck drivers
- 2,311 Nurses
- 2,957 Law enforcement officers

CCBC IS HOME TO:

- Degree, certificate and workplace certification programs that educate students for transfer to four-year institutions as well as train people for recession-proof work in fields such as renewable energy technology, air traffic control and cybersecurity.
- Athletic and performing arts facilities that serve nearly 2 million residents annually.
- The CCBC Dental Hygiene Clinic, which has provided free or low-cost services to nearly 15,000 residents.

CCBC EDUCATES:

- More than 2,000 citizens each year with GED courses.
- Special populations – youth, seniors and students with disabilities – with more life-enrichment courses than any other organization in the greater Baltimore region.
- More undergraduates in Nursing and other health care professions than any other college or university in Maryland.
- Students who stay in Baltimore County and the Baltimore metropolitan region to build their careers, raise their families and contribute to a higher quality of life.



ccbcmd.edu/connect

